



SIGNATUREGLOBAL (INDIA) LIMITED | CIN: L70100DL2000PLC104787
Regd. Office: 13th Floor, Dr. Gopal Das Bhawan, 28 Barakhamba Road, Connaught Place, New Delhi – 110001
Corp. Office: Unit No. 101 Ground Floor, Tower-A, Signature Tower, South City-1, Gurugram, Haryana – 122001

Disclaimer : Promoter urges every applicant to inspect the project site and, therefore, requests to make personal judgment prior to submitting an application for allotment. Unless otherwise stated, all the images, visuals, materials and information contained herein are purely creative/artistic and may not be actual representations of the product and/or any amenities. Further, the actual design may vary in the fit and finished form, from the one displayed above. Journey time shown, if any, is based upon Google Maps which may vary as per the traffic at a relevant point of time. The dimensions specified, if any, are inclusive of wall-to-wall measurements, excluding finishing margins. Potential offsets within rooms may occur due to structural elements. *Rate mentioned above, if any, does not include GST and other statutory charges as applicable. T & C Apply. 1 sq. mt. = 10.7639 sq. ft. Site is part of agriculture zone as per its development plan hence services would be internally provided and managed by promoter.

RERA REGISTRATION NO. :
[RC/REP/HARERA/GGM/874/606/2024/101](#)
DATED: 07.10.2024
([www.haryanarera.gov.in](#))

Where The True
Colours Of Happiness
Will Come Alive...





HUES OF HAPPINESS!

**FORTUNES ARE MADE IN A FEW LIFE-CHANGING MOMENTS.
HERE IS ONE FOR YOU...**

You sense an opportunity and instinctively act upon it. Your inner voice urges you to seize the moment, shaping your life's story. The greatest achievements arise from such moments of inspiration. Now, a life-changing opportunity awaits - grasp it with pride, and feel the joy of a decision made at the perfect time.



VARIED COLOURS OF NATURE



VIBRANT COLOURS OF HAPPY LIVING



DIVERSE COLOURS OF
A PROGRESSIVE COMMUNITY



INSPIRING COLOURS OF
GROWTH & SUCCESS



INTRODUCING



Spanning across 129 acres of vibrant living, every shade comes to life and every moment blooms. City of Colours offers a serene, gated community with 20+ premium amenities, an expansive clubhouse, picturesque open spaces, and beautifully landscaped boulevards. With a seamless mix of residential, industrial and commercial plots, life here isn't just exciting—it's extraordinary.



Artist's Impression*

EMBRACE SERENITY IN EVERY SHADE

Discover a sanctuary where nature's tranquility meets life's vivid moments. At City of Colours, peace of mind blossoms in every corner, from the gentle whisper of the breeze through open spaces to the harmony that surrounds your daily life. Escape the noise and step into a place where nature paints your path to true serenity.



Stock Image*

GREEN LIFE, PURE AIR, FRESH VIBES, AWE-INSPIRING VISTAS

All your wishes of an affluent lifestyle blessed by nature are about to come true in a promising locale. Join a gated community that caters to all your wants and desires, with countless conveniences at your fingertips. The City of Colours offers a premium clubhouse and an exquisite range of exotic amenities. It gets more and more exciting as you get closer and know more about it. Read on...



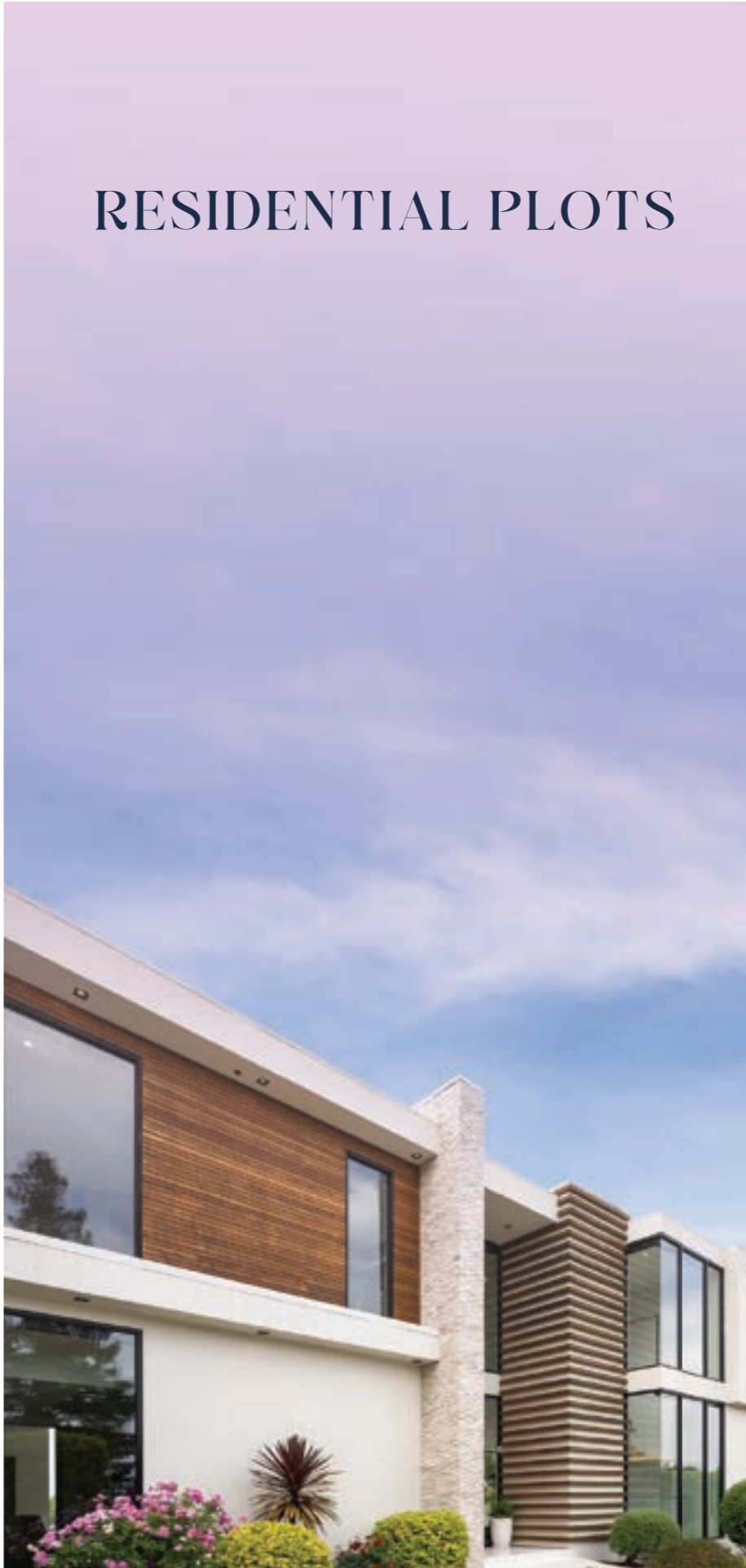
Stock Image*

AN URBAN TOWNSHIP WITH A COMPREHENSIVE MIX OF SPACES

At the heart of the City of Colours lies the vision of a comfortable life embraced by idyllic surroundings, providing effortless access to all your desires. Spanning 129 acres, this vibrant township features Residential, Commercial, and Industrial Plots, creating abundant opportunities for employment and business growth. Residents can indulge in a premier lifestyle club, while a planned A+ school caters to families, ensuring convenience and excellence within the community.



RESIDENTIAL PLOTS



COMMERCIAL PLOTS



INDUSTRIAL PLOTS



RESIDENTIAL PLOTS ranging from

103 sq.mt. to **150** sq.mt.

Nestled amidst nature's finest hues, these residential plots offer a serene environment, perfect for crafting a home where cherished memories and moments of togetherness bloom.



INDUSTRIAL PLOTS ranging from

400 sq.mt. to **2800** sq.mt.

Designed to inspire, the industrial plots offer growth and endless prospects. Strategically located, they foster innovation, creating the ideal environment for businesses to thrive.



Stock Image*

COMMERCIAL PLOT

1.9 acres.

With vibrant surroundings and strategic accessibility, the commercial plots spanning 1.9 acres elevate business potential. These spaces are perfect for dynamic ventures that thrive within a flourishing community.



CONNECTING YOU TO ALL POSSIBILITIES

Perfectly situated for growth and opportunity, City of Colours offers seamless access to NH-8. This vibrant destination is home to leading business centers, esteemed companies, and exceptional schools and colleges, all within close reach.



Easy Highway Connectivity



Convenient Access to Delhi and Gurugram



Top-notch Industries in Close Vicinity



Schools & Colleges Nearby



Availability of Skilled Manpower and Semi-Skilled Labour

WELCOME TO CLEAR SKIES AND OPEN SPACES

Say goodbye to congestion, smog, and chaos. City of Colours is a green paradise where expansive open skies and awe-inspiring hills meet urban convenience. Positioned for seamless connectivity, this vibrant community offers proximity to leading industries, large-scale manufacturing hubs, and world-class schools—all just a short distance away.



Stock Image*

A RISING LOCATION NESTLED AMID NATURE’S PARADISE

Nestled in a natural setting with direct access to NH8, this strategic hub boasts renowned industries, manufacturing plants, and world-class schools. Its excellent connectivity to Delhi and Gurugram fosters growth and attracts leading businesses. With skilled labor, refreshing weather, and affordable prices, this area offers long-term investment benefits in a serene and inviting environment.



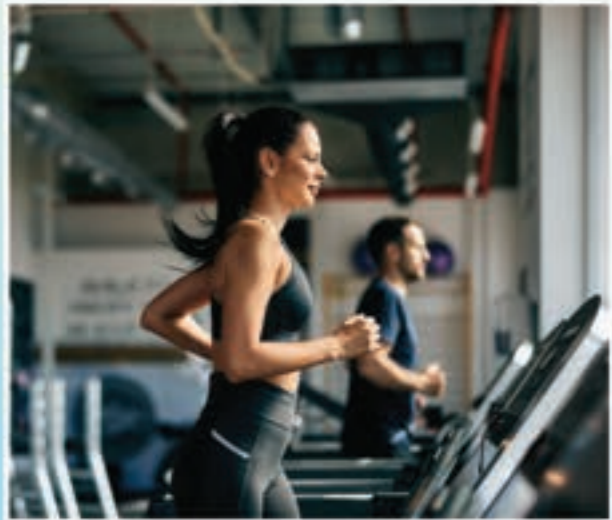
A HUB FOR RELAXATION AND TOGETHERNESS

A clubhouse is the heart of community living, a space where relaxation and connection thrive. It offers residents a place to unwind, socialize, and enjoy various amenities that enhance their lifestyle. Imagine a stunning swimming pool for leisure, beautifully landscaped gardens for gatherings, and a modern fitness center to keep you active. Welcome to Club Anandam, where we elevate this experience to celebrate the art of living well. Here, joy flourishes, and every moment is an opportunity to connect and create lasting memories.



Artist's Impression*

AMENITIES



GYMNASIUM



INDOOR GAMES



MULTIPURPOSE HALL



FINE DINING



KIDS' INDOOR PLAY AREA



DOCTOR'S ROOM



SWIMMING POOL

Stock Images*

AMENITIES



KIDS' PLAY AREA



OUTDOOR GYMNASIUM



RESIDENTS COMMUNITY PARK



MIYAWAKI FOREST



SCULPTURE GARDEN



ACTIVE PARK



PET PARK

Stock Images*

TOWNSHIP AERIAL VIEW



ENTRANCE BOULEVARD





COMMERCIAL & RETAIL HUBS



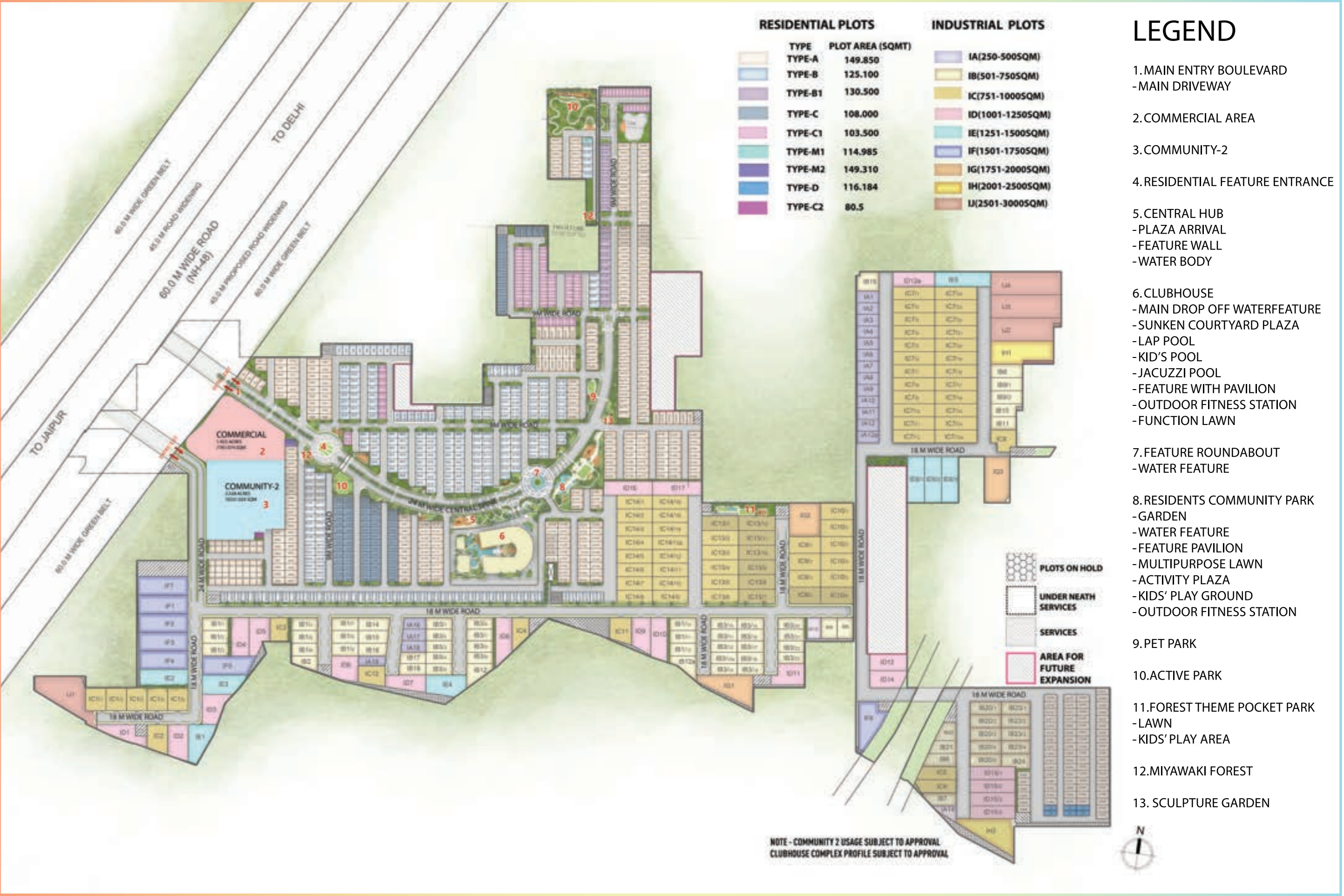
Artist's Impression*

CLUB ANANDAM



Artist's Impression*

BLUEPRINT FOR VIBRANT LIVING



THE TEAM OF ACCLAIMED VETERANS WHO HAVE ENVISIONED THIS MAGNUM OPUS

Experience the vision of our acclaimed team of veterans, who have brought this project to life. Their expertise in architecture and landscaping creates a harmonious blend of beauty and functionality, enhancing your living experience with thoughtfully curated spaces.



+ +

Aedas

+ +

Master Planning by AEDAS Singapore



NMP Designs – Resident Landscape Architect



COOPERS HILL

Landscape Consultant – COOPERHILLS from Singapore



SANELAC – MEP Consultant



Gian P. Mathur – Resident Architect



SIGNATURE GLOBAL – THE NEXT LEVEL

Signature Global is revolutionizing India's real estate landscape with a strong emphasis on affordable and mid-housing segments. Backed by esteemed business investors, the company embodies trust, innovation, and quality. With a market share of 13% in the Delhi NCR region and 27% in Gurugram's mid-housing and premium segments, Signature Global has delivered an impressive 11 million sq. ft. of housing area in the affordable and mid housing categories. The company boasts a robust pipeline of 29.6 million sq. ft. in forthcoming projects and 16.4 million sq. ft. of ongoing developments, solidifying its position as a leader in the market. Renowned for its commitment to timely delivery, Signature Global employs advanced construction technologies and holds prestigious certifications for sustainability. Recently listed on BSE and NSE, the company is poised to redefine real estate through its customer-centric and sustainable approach.

